

Clustering and Clustering Tools

- ▶ Testing
- ▶ Migrate configuration settings
- ▶ Quick configuration and troubleshooting
- ▶ Storage configuration
- ▶ Performance and reliability
- ▶ Security

Enhanced Web Services

- ▶ **Microsoft Internet Information Services (IIS)**
 - ▶ Enhanced security
 - ▶ Easier application of patches
 - ▶ Easier for programmers to write and configure Web applications
 - ▶ Better management tools: IIS Manager

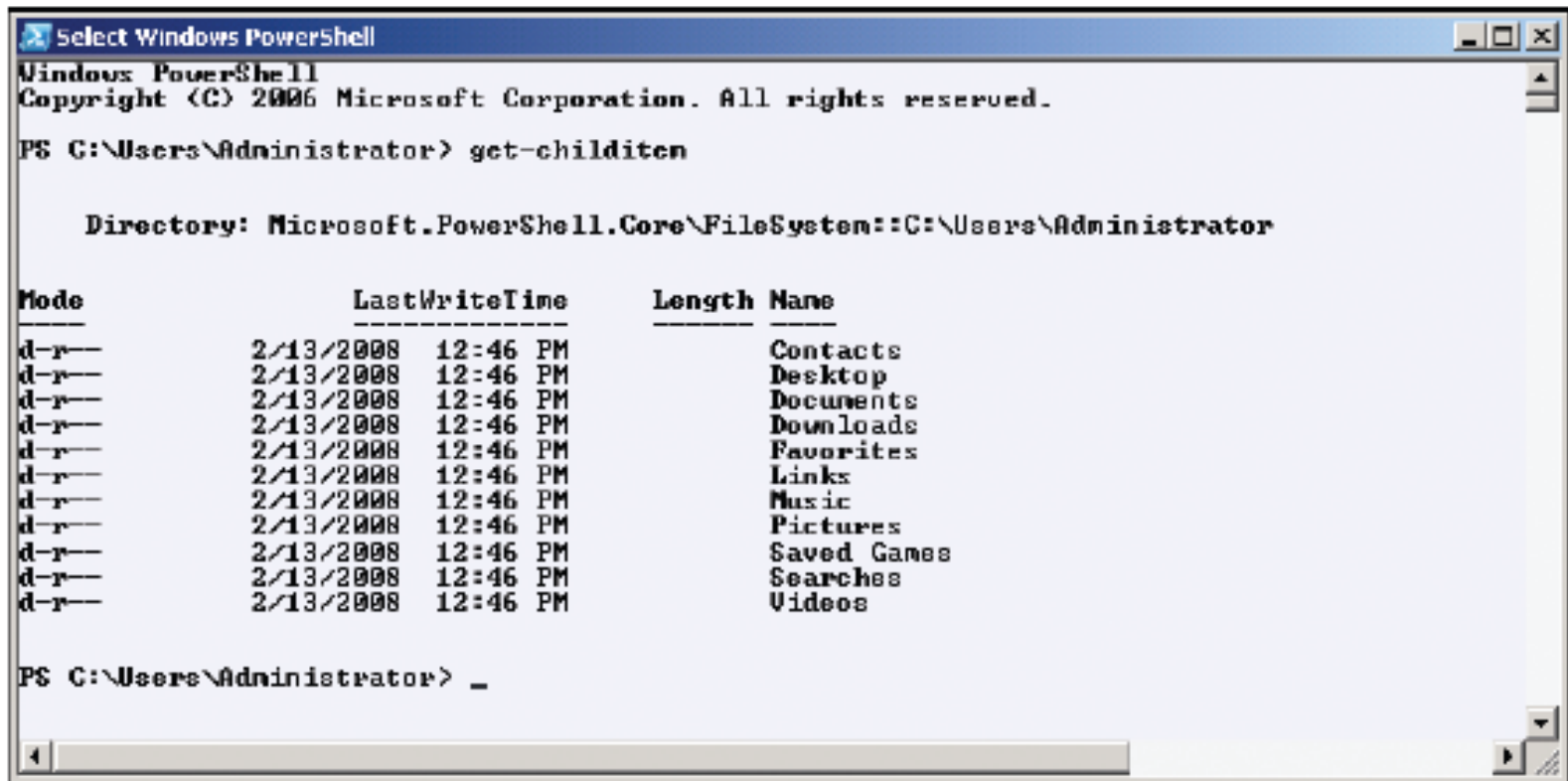
Windows Server Core

- ▶ Minimum server configuration
- ▶ Advantages:
 - ▶ No GUI overhead
 - ▶ Less disk space and memory needed
 - ▶ Smaller attack surface
- ▶ Interact with server via command line

Windows PowerShell

- ▶ Command-line interface that offers a shell
- ▶ Perform common administration tasks
- ▶ Use **cmdlets**
 - ▶ 130 command line-tools
- ▶ Scripting language

Windows PowerShell (cont'd.)



The screenshot shows a Windows PowerShell window titled "Select Windows PowerShell". The command prompt shows the command `get-childitem` executed in the directory `C:\Users\Administrator`. The output is a table listing the contents of the directory.

| Mode | LastWriteTime | Length | Name |
|-------|--------------------|--------|-------------|
| d-r-- | 2/13/2008 12:46 PM | | Contacts |
| d-r-- | 2/13/2008 12:46 PM | | Desktop |
| d-r-- | 2/13/2008 12:46 PM | | Documents |
| d-r-- | 2/13/2008 12:46 PM | | Downloads |
| d-r-- | 2/13/2008 12:46 PM | | Favorites |
| d-r-- | 2/13/2008 12:46 PM | | Links |
| d-r-- | 2/13/2008 12:46 PM | | Music |
| d-r-- | 2/13/2008 12:46 PM | | Pictures |
| d-r-- | 2/13/2008 12:46 PM | | Saved Games |
| d-r-- | 2/13/2008 12:46 PM | | Searches |
| d-r-- | 2/13/2008 12:46 PM | | Videos |

Figure 1-3 Using Windows PowerShell for a directory listing
Courtesy Course Technology/Cengage Learning

Virtualization

- ▶ Using Hyper-V
- ▶ Capabilities:
 - ▶ Compatible with clustering
 - ▶ Able to handle up to a four-processor SMP computer
 - ▶ Can be used with Windows and Linux operating systems
 - ▶ Compatible with different types of disk storage methods
 - ▶ Enables fast migration from one computer to another
 - ▶ Can house 64-bit and 32-bit operating

Reliability

- ▶ **Kernel runs in privileged mode**
 - ▶ Core programs; computer code of operating system
 - ▶ Extra level of security
- ▶ **Protected processes**
 - ▶ Computer program or portion of program
 - ▶ Protects premature interruption
- ▶ **Management features:**
 - ▶ Server Manager
 - ▶ Wizards
 - ▶ Windows Reliability and Performance Monitor

Reliability (cont'd.)

- ▶ Activity 1-2: Viewing Running Processes
 - ▶ Objective: View the processes running in Windows Server 2008

Multitasking and Multithreading

- ▶ **Multitasking**

- ▶ Ability to run two or more programs at the same time

- ▶ **Multithreading**

- ▶ Capability of programs written to run several program code blocks at the same time
 - ▶ **Preemptive multitasking**

Multitasking and Multithreading (cont'd.)

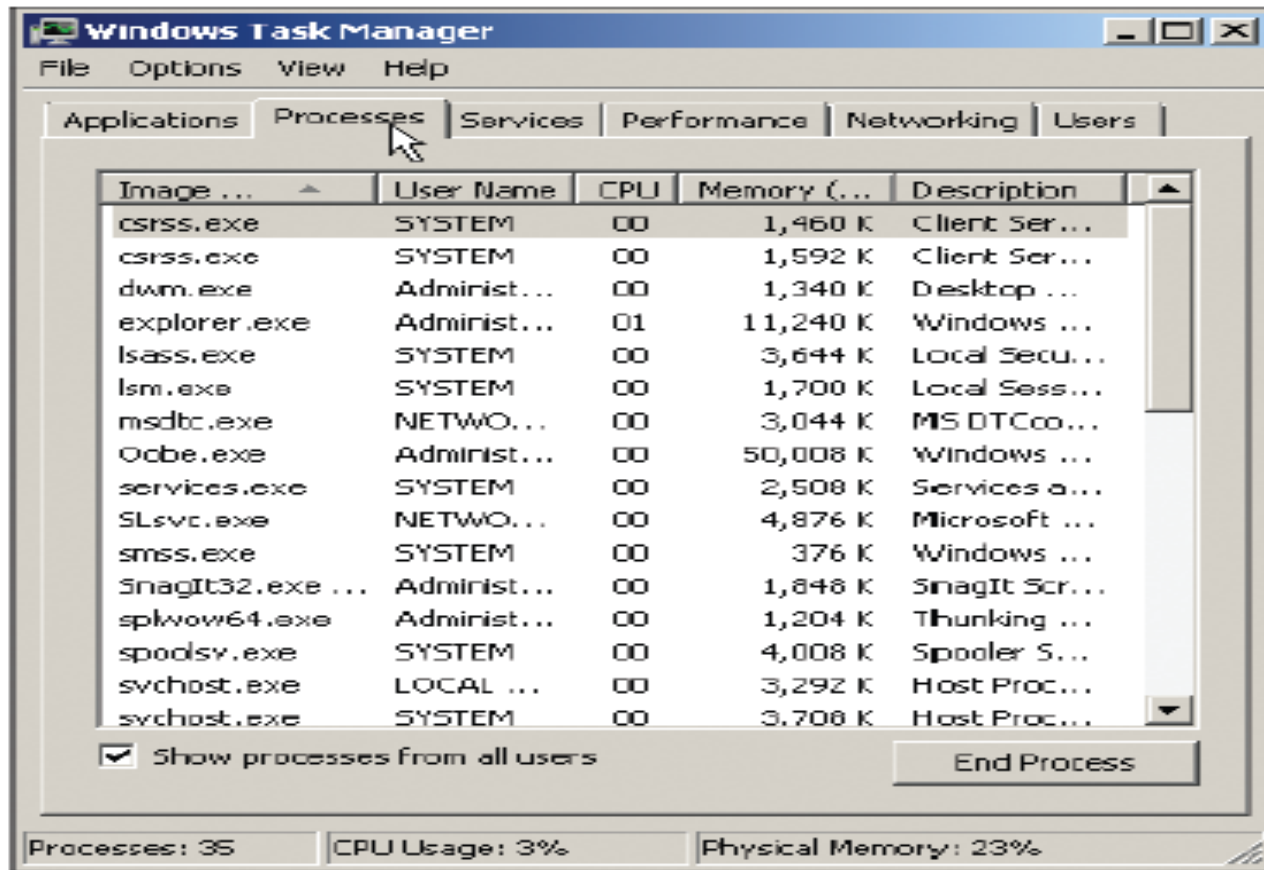


Figure 1-4 Using Task Manager to view running processes
Courtesy Course Technology/Cengage Learning

Planning a Windows Server 2008 Networking Model

► Network

- Communication system
- Enables computer users to share equipment, software, data, and transmissions

► Peer-to-peer networking

- Spreads resource administration among server and non-server members of network
- Used by small businesses

► Server-based networking

- Centralizes network administration on servers
- Used by medium and large networks

Planning a Windows Server 2008 Networking Model (cont'd.)

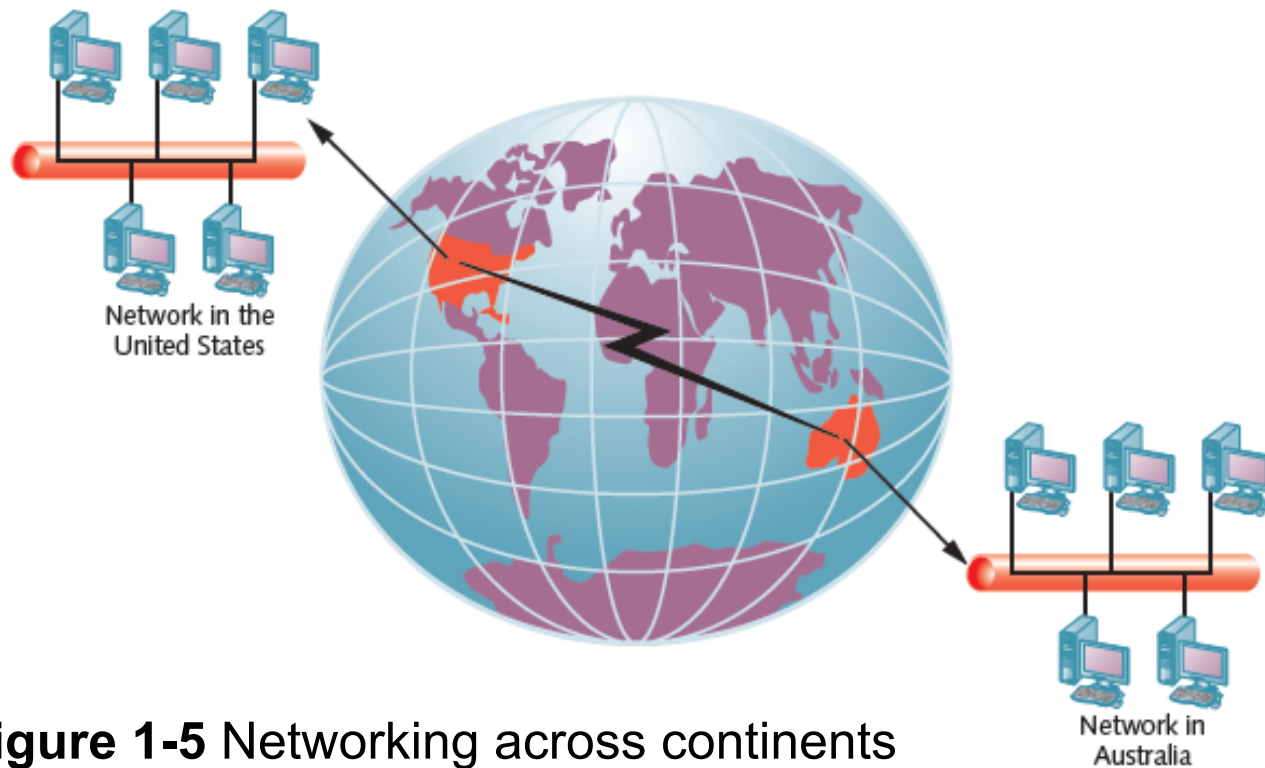


Figure 1-5 Networking across continents
Courtesy Course Technology/Cengage Learning

Peer-to-Peer Networking

- ▶ One of the simplest ways to configure a network
- ▶ No special computer needed
- ▶ Disadvantages:
 - ▶ Network management decentralized
 - ▶ Security is responsibility of each user
 - ▶ Less effective as number of workstations exceeds 10
- ▶ Activity 1-3: Determining if a Computer Is in a Domain or a Workgroup
 - ▶ Objective: Discover if a particular computer is in a domain or a workgroup

Server-Based Networking

- ▶ **Server**
 - ▶ Single server can act as file and print server, Web server, network administration server, database server, e-mail server
 - ▶ Can handle many users at once
- ▶ **Advantages**
 - ▶ Single log on
 - ▶ Stronger security
 - ▶ Sharing of files and resources
 - ▶ E-mail server

Server-Based Networking (cont'd.)

- ▶ Advantages (cont'd.)
 - ▶ Software applications are shared
 - ▶ Databases are managed and secured
 - ▶ Easier backups
 - ▶ Resource sharing can be customized
 - ▶ Software updates quicker and easier to install

Server-Based Networking (cont'd)

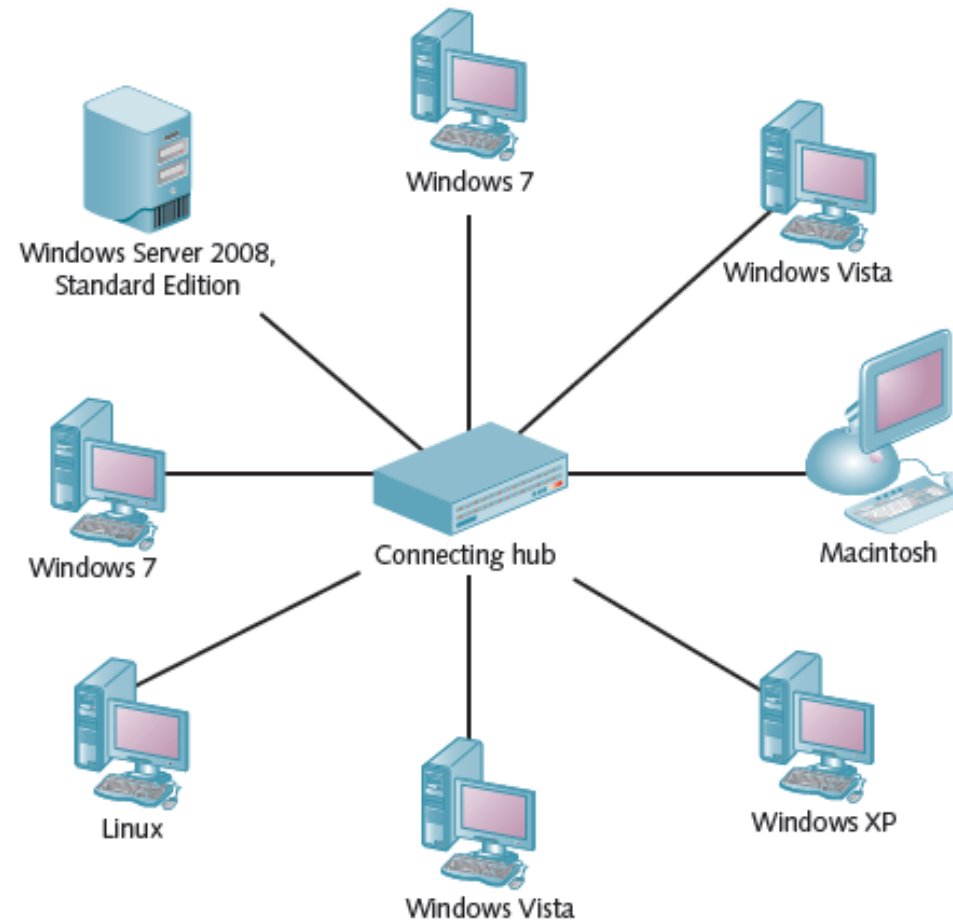


Figure 1-7 A server-based network
Courtesy Course Technology/Cengage Learning

Protocols for the Windows Server 2008 Networking Model

- ▶ **Protocol** sets guidelines for:
 - ▶ Data formatting into packets and frames
 - ▶ Data transmission
 - ▶ Interpretation of packets and frames
- ▶ **Packets and frames**
 - ▶ Units of data transmitted from a sending computer to a receiving computer

Protocols for the Windows Server 2008 Networking Model (cont'd.)

- ▶ **Transmission Control Protocol/Internet Protocol (TCP/IP)**
 - ▶ Suite of protocols and utilities that support communication across LANs and the Internet
- ▶ **Local area network (LAN)**
 - ▶ Network of computers in relatively close proximity
- ▶ TCP/IP used for several reasons

Transmission Control Protocol

- ▶ Provides for reliable end-to-end delivery of data by controlling data flow
- ▶ **Connection-oriented communication**
 - ▶ Ensures that packets are delivered in correct sequence with accurate contents