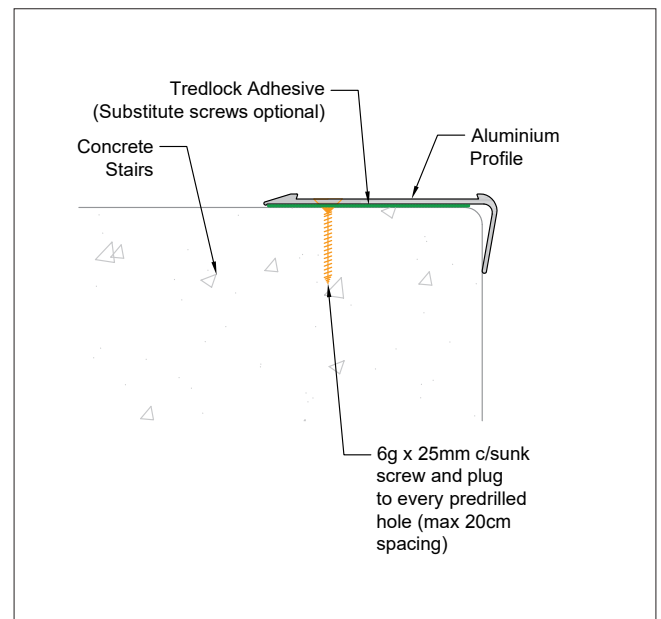


Installation Guide

Date | 02.07.2018
Release No. | 1

Equipment required

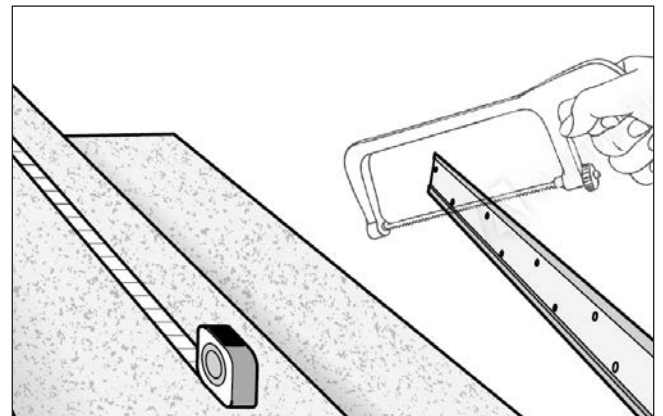
- Mechanical fixings - countersunk self-tapping screws (6g x 25mm) M6 or #8
- Note: Screws must be countersunk so the Tredsafe insert will adhere over the top once installed.)*
- Nylon concrete plugs (5g x 25mm)
 - Drill bit size 5mm wide with drill depth minimum 38mm for strength
 - Battery operated cordless drill with hammer function (or electric drill if preferred)
 - Phillips screwdriver bits
 - Hammer
 - Wipes or cloth rags
 - Denatured or Isopropyl alcohol



Profile Installation

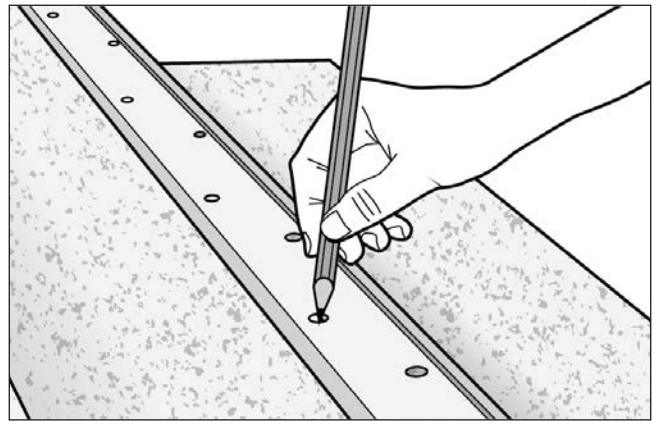
Step 1

- Measure and cut the profile to the required length. Lengths shorter than two pre-drilled screw holes require a hole to be manually drilled and countersunk on site. Maximum spacing of screw fixings is every 20 centimetres.



Step 2

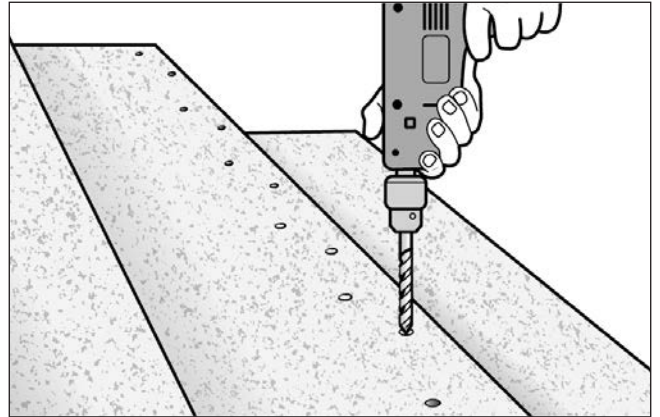
- Locate the profile against the stair nose and use a pencil or marker to mark the location for the pre-drilled countersunk holes.



Step 3

- Remove the profile and drill the concrete plug holes with the 5mm masonry drill bit.

Tip: It may help to measure and mark the depth to drill and wrap tape around the masonry bit to ensure the correct and uniform depth.



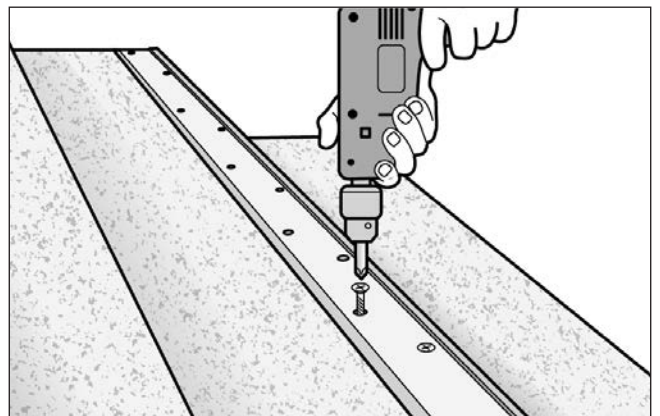
Step 4

- Clean away the concrete dust from drilling and push in by hand or lightly tap the plugs into the holes with a hammer.



Step 5

- Place the cut profile length back into its fixed position on the stair nosing edge aligning the drilled holes.
- Screw fix the profile using the 6g x 25mm countersunk self-tapping screws with the cordless drill and correct screwdriver bit.

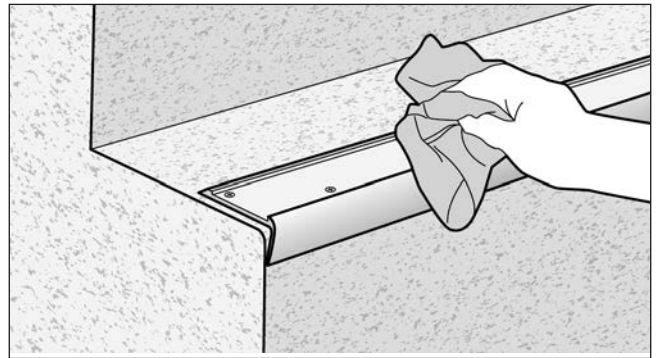


Once all screws are fastened, the profile installation is complete and the insert can be installed.

Installation of Adhesive Insert

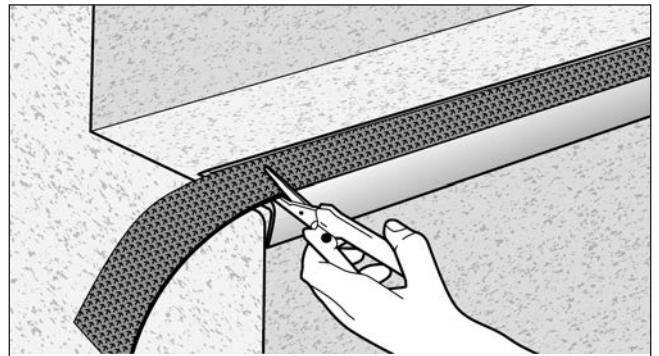
Step 1

- Ensure your aluminium channel is clean from dust, residues and debris. Wipe down with a cleaning solvent (Isopropyl Alcohol or similar).



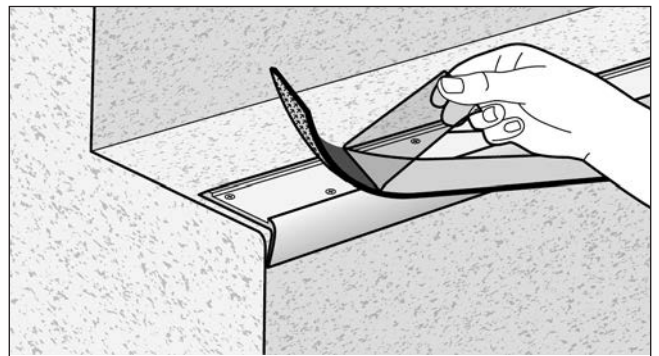
Step 2

- Precut the Insert to your required length.



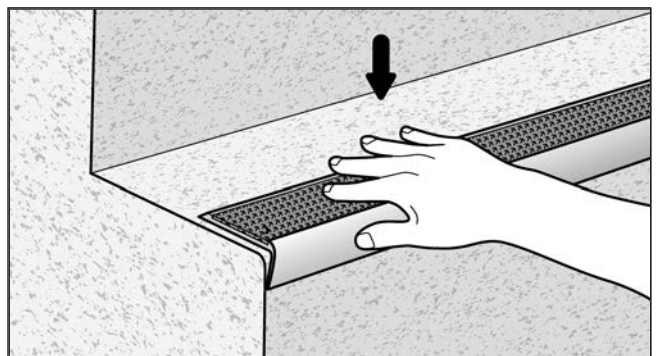
Step 3

- Remove the adhesive backing liner from the Tredsafe Insert.



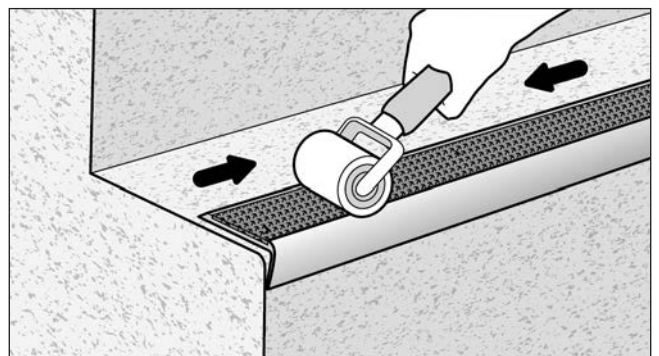
Step 4

- Install by placing the Insert into the nosing and pressing into place without undue stretching.



Step 5

- Once in place, roll over the Insert to ensure consistent adhesion and a secure bond.
- Please take care not to stretch the Insert when rolling.



Installation is now complete.